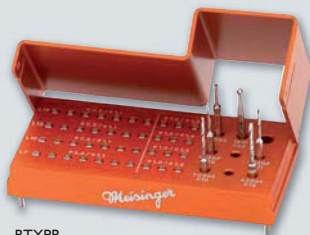


BTXPR Screw System TX Professional

Bone Fixation



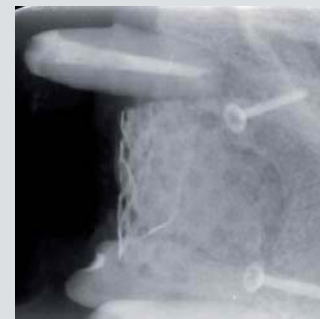
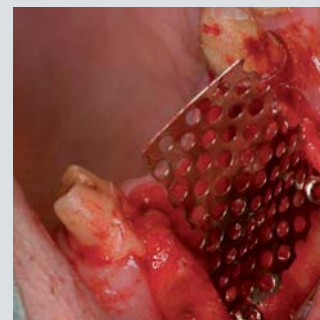
Anwendungsvideo
Application Video



BTXPR

Osteosynthesis Screw System TX (Osteosintează cu sistem șurub TX) permite fixarea universală a grefei osoase autologe. Conexiunea de torx garantează plasarea sigură cu șurub cu o forță de transfer deosebit de mare. Diametrul mic și dimensiunea capului plat permite de asemenea utilizarea în spații restrânse. Sistemul cu șurub TX include șuruburi de lungimea 7 și 10 mm. Sistemul cu șurub TX Professional include șuruburi de lungimea 7, 10, 13 și 16 mm.

Osteosynthesis Screw System TX enables universal fixation of autologous bone grafts. The Torx connection guarantees secure screw placement with particularly high force transfer. The small diameter and the flat head size also enables use in restricted spaces. The Screw System TX includes screws of lengths 7 mm and 10 mm. The Screw System TX Professional includes screws of lengths 7 mm, 10 mm, 13 mm and 16 mm.



© Dr. Kazunori Umeda, Japan

	Fig.	Shank ¹ / Length	Ref.-No.	Size	Pieces/Kit
	203RF	RA L	330 205 417 364	009	1
	203RF	RA L	330 205 417 364	011	1
	TC203	RA	330 204 423 364	010	1
	A2001	RA L	330 205 424 364	013	1
	HM 141F	RA L	500 205 001 251	023	1
	31053	RA L	-	-	1
	TCT09*	7 mm	-	0.9/1.1	7
	TCT09*	10 mm	-	0.9/1.1	7
	TCT10*	7 mm	-	1.0/1.3	3
	TCT10*	10 mm	-	1.0/1.3	3

¹204=RA, 205=RA L



Zusätzlicher Inhalt | Additionally content | Adicional contenido:
Screw System TX Professional

	Fig.	Shank ¹ / Length	Ref.-No.	Size	Pieces/Kit
	TCT09*	13 mm	-	0.9/1.1	7
	TCT09*	16 mm	-	0.9/1.1	7
	TCT10*	13 mm	-	1.0/1.3	3
	TCT10*	16 mm	-	1.0/1.3	3



Disponibil optional | Optionally available for BTX00 and BTXPR
Surubelnita | Screwdriver |



illustrated 1:2

Fig.: **TL0T1**